

ALCHEMY

Michel Leroy

ALCHEMY

The Alchemy series is a collaboration with photographer Michel Leroy and a range of professional athletes that explores the tension between sensuality and physicality. The images are simple in form, but rich in ideas and emotions. Moments of sculptural balance, anticipation and strength define the graceful lines and impossible gestures of this vivid Black and White series.

In these nudes the artist creates body-positive images that are exaggerated and explicit without sexual objectification. The images are a celebration of athletic confidence and vitality at its most pure. By emphasizing form over identity, he seduces the viewer to reveal empathy for body acceptance that transcends the self-image obsession of social media. The process of transmuting the skin metallic unites the constellation of skin tones and strips bare preconceptions while illuminating physical radiance.

The images are notable for the tactile permanence of flesh revealed through the unique in-camera style he has developed over a year of experimentation. The technique is of great relevance and bears witness to the labour-intensive process reminiscent of a Daguerreotype in the pixel age. The result is a series that balances poise and precision celebrated through the singular beauty of the human form.

ABOUT THE ARTIST

Michel Leroy is a New York based entertainment and advertising photographer with a produced style that captures an authentic connection to real personalities. From celebrity chefs to olympic athletes, the images reveal a level of comfort and vitality shared amongst friends.

Michel Leroy Photographer

2X Productions LLC

115 W 30th Street #200

New York, NY 10001

Studio 212-475-4110

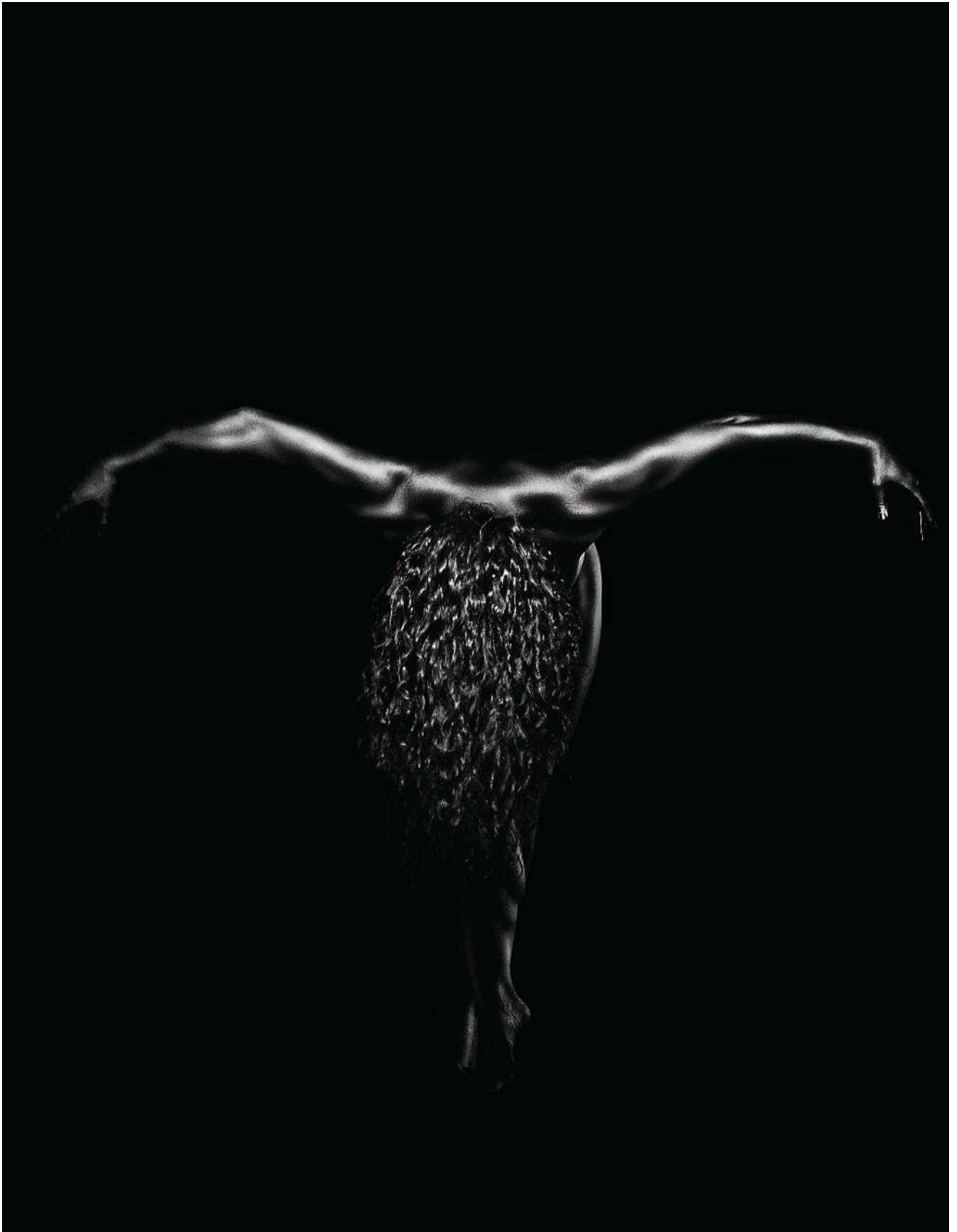
studio@michelleroyphoto.com

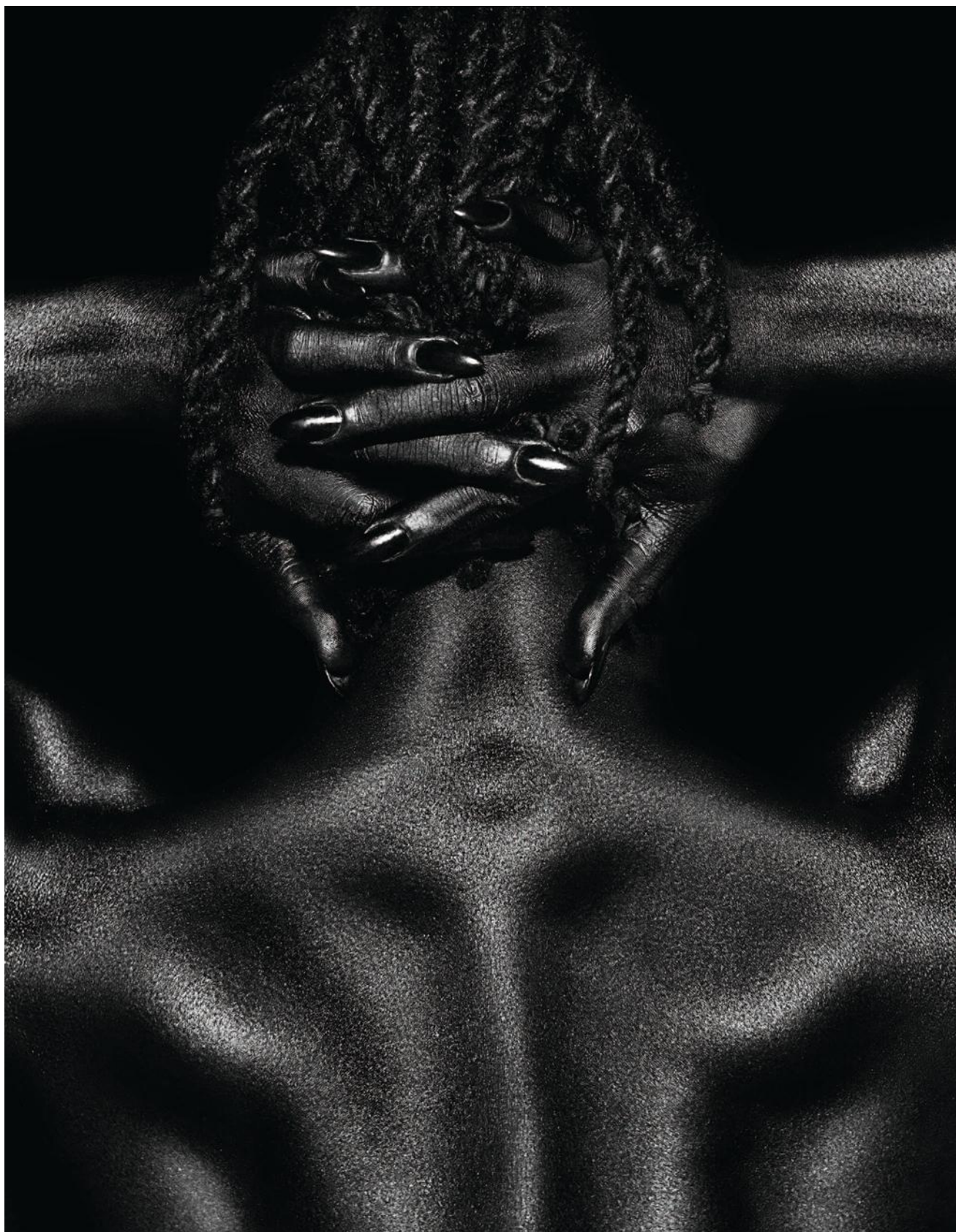
editions.michelleroyphoto.com

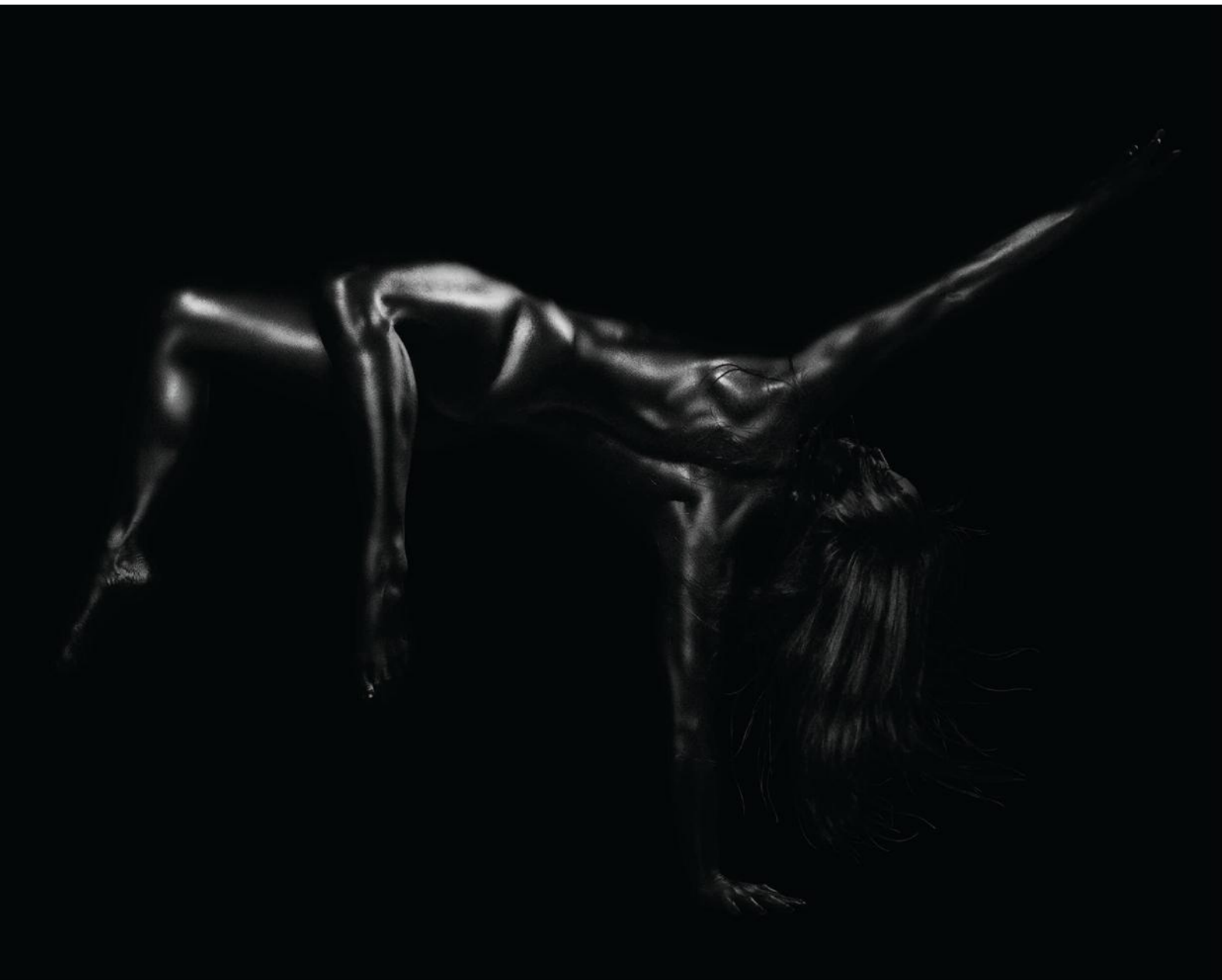


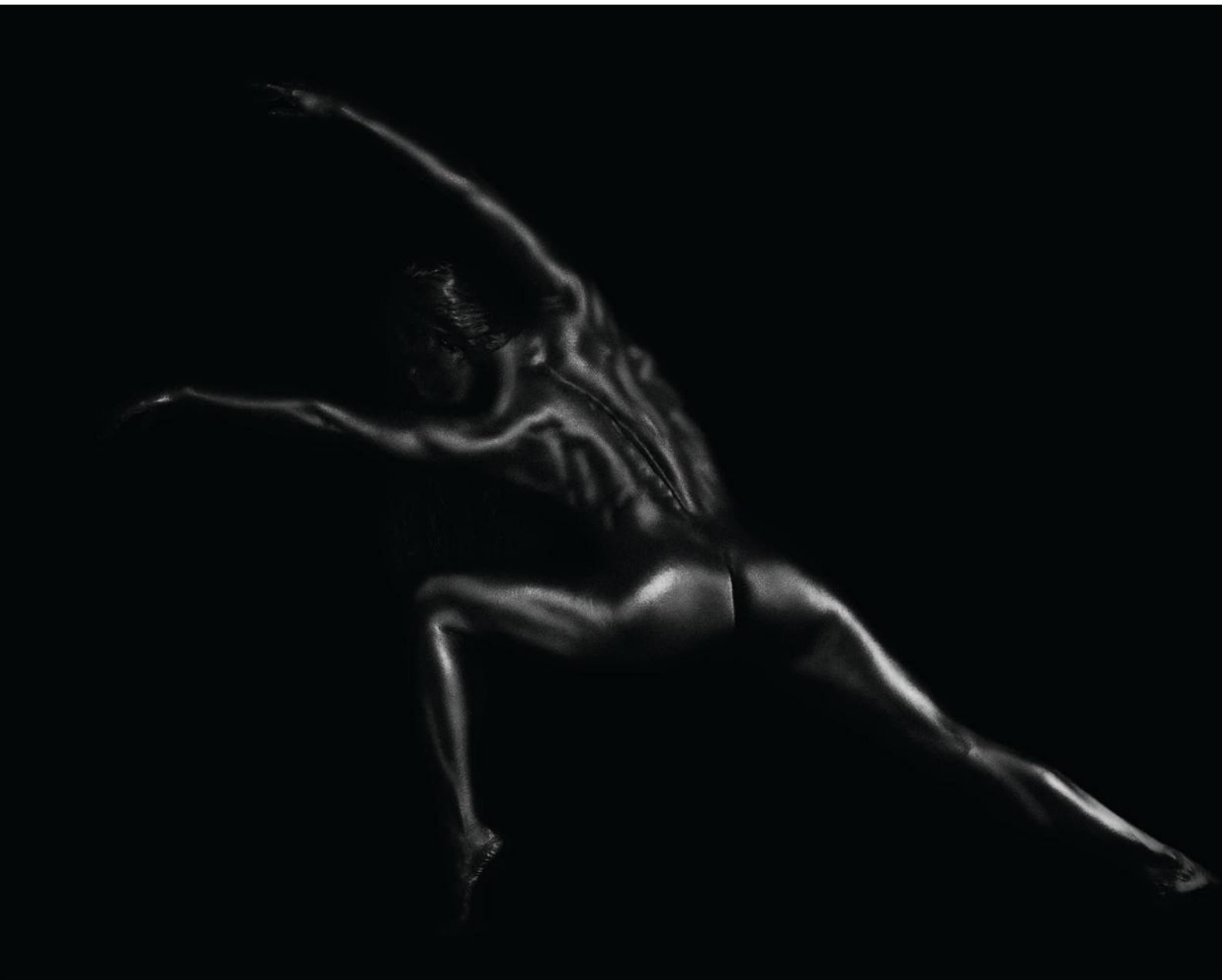


| Left, Alchemy Jb244 | Above, Alchemy Jc53







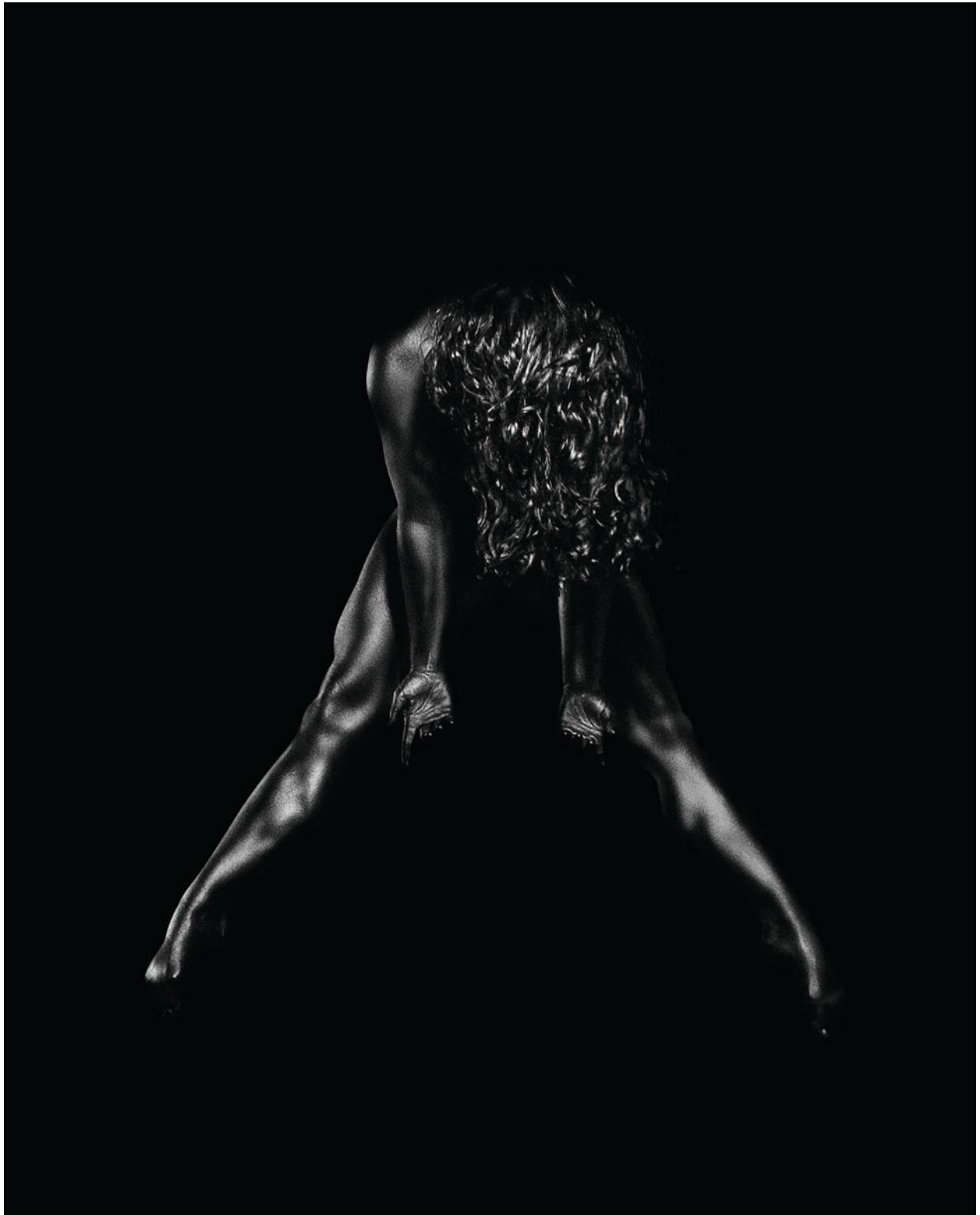


| Alchemy Lm54



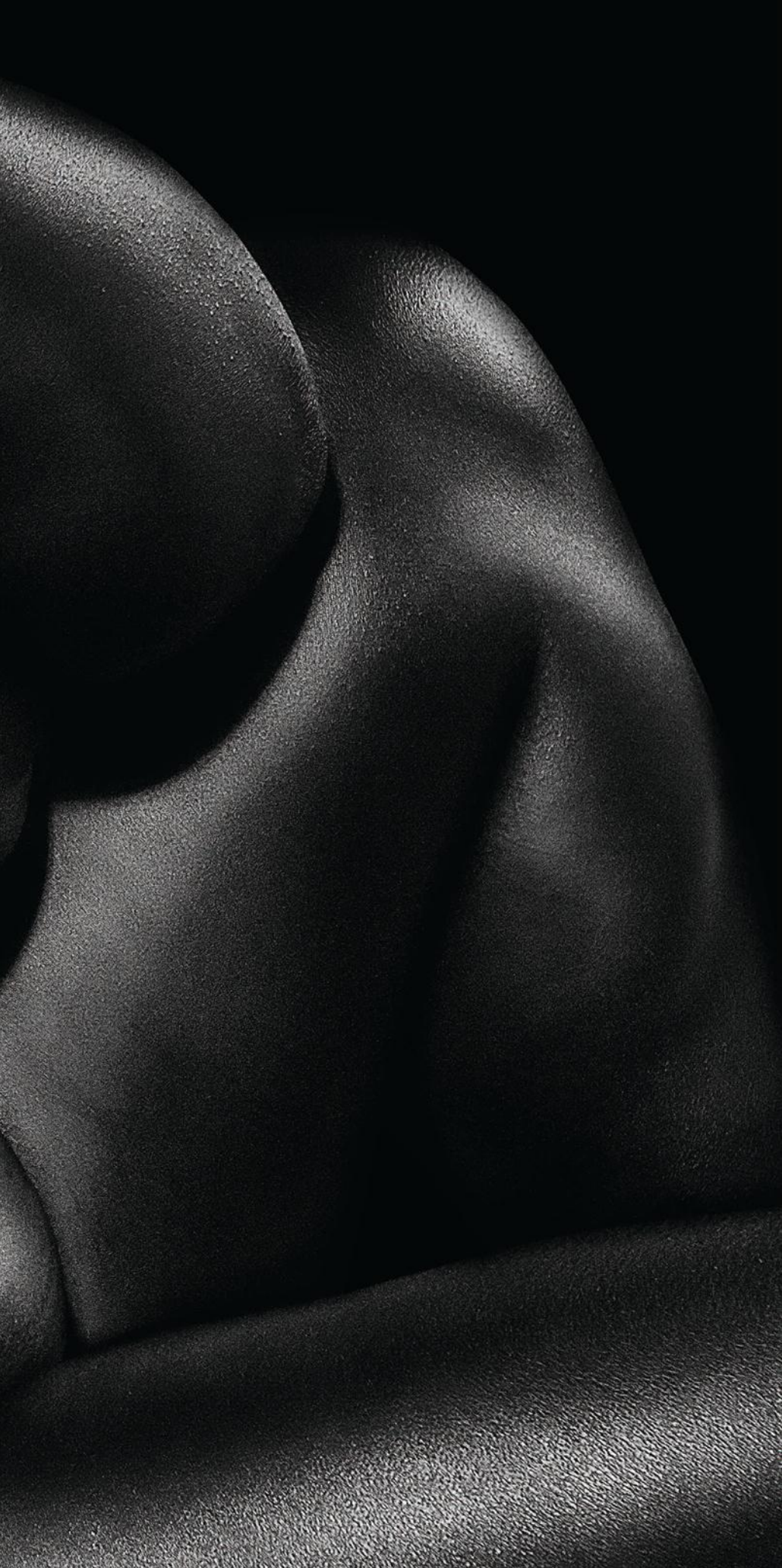






| Left, Alchemy Ms31 | Above, Alchemy As46







| Above, Alchemy Lm354 | Right, Alchemy Sd28



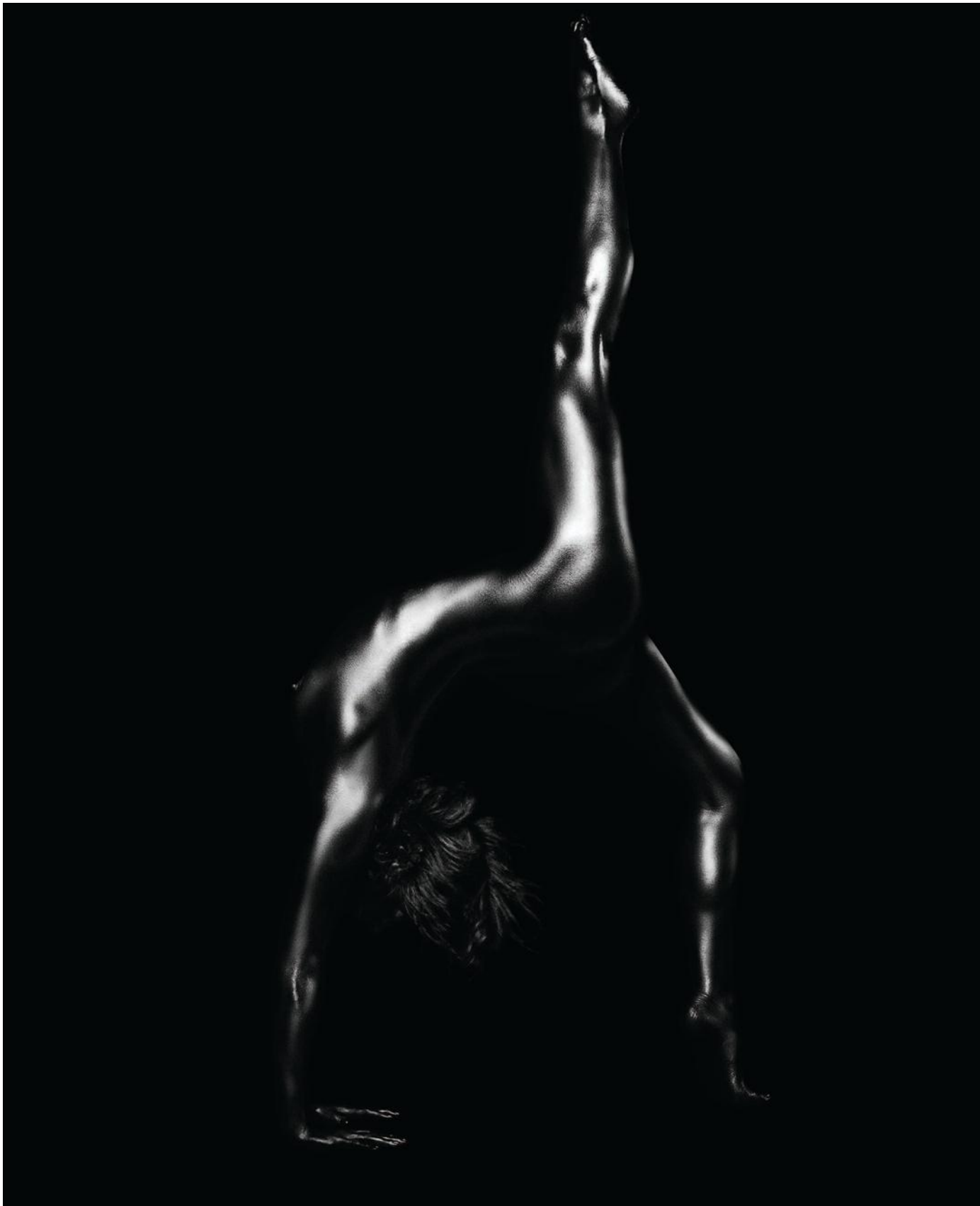


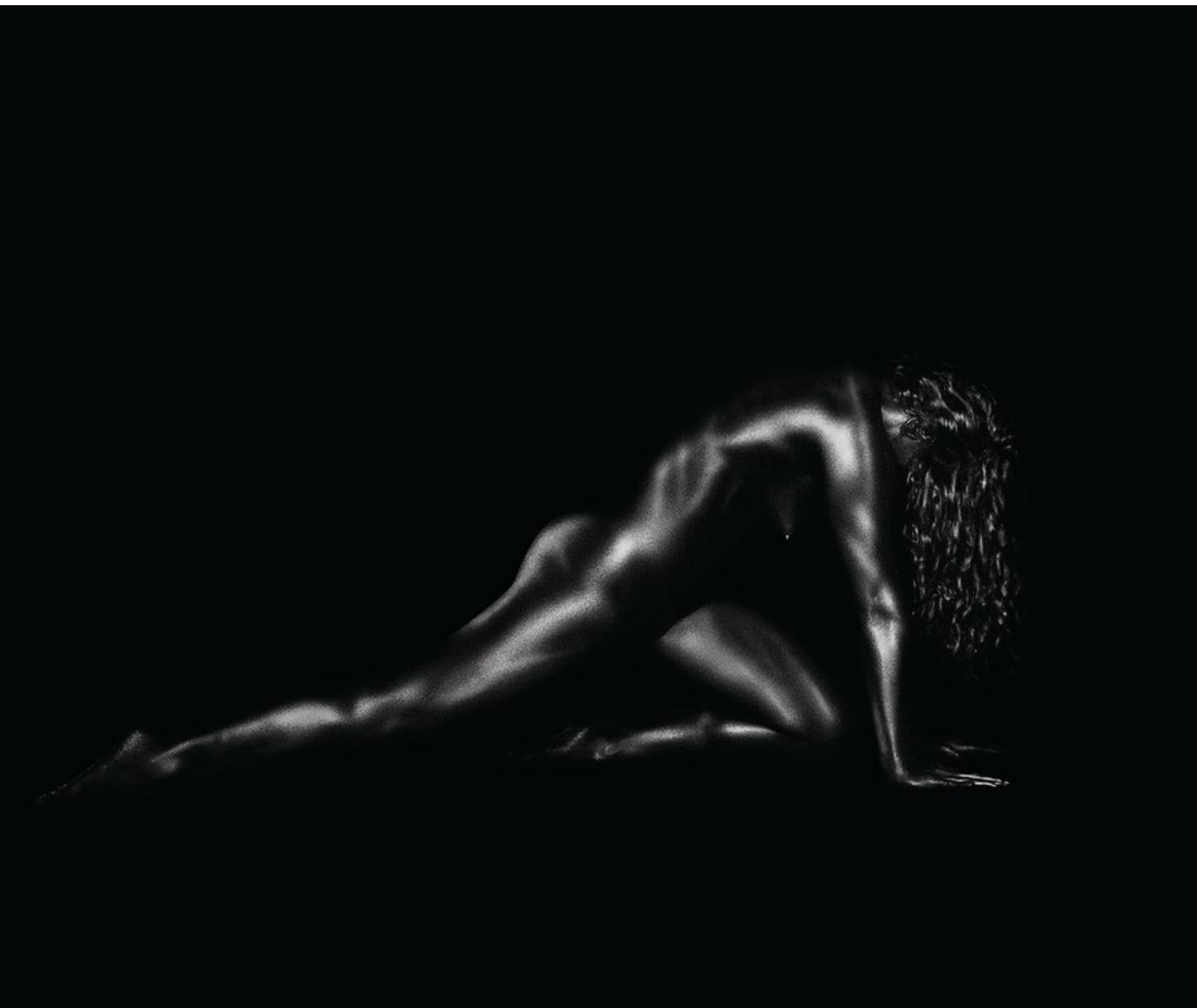
| Alchemy Mm61



I Alchemy Rm48







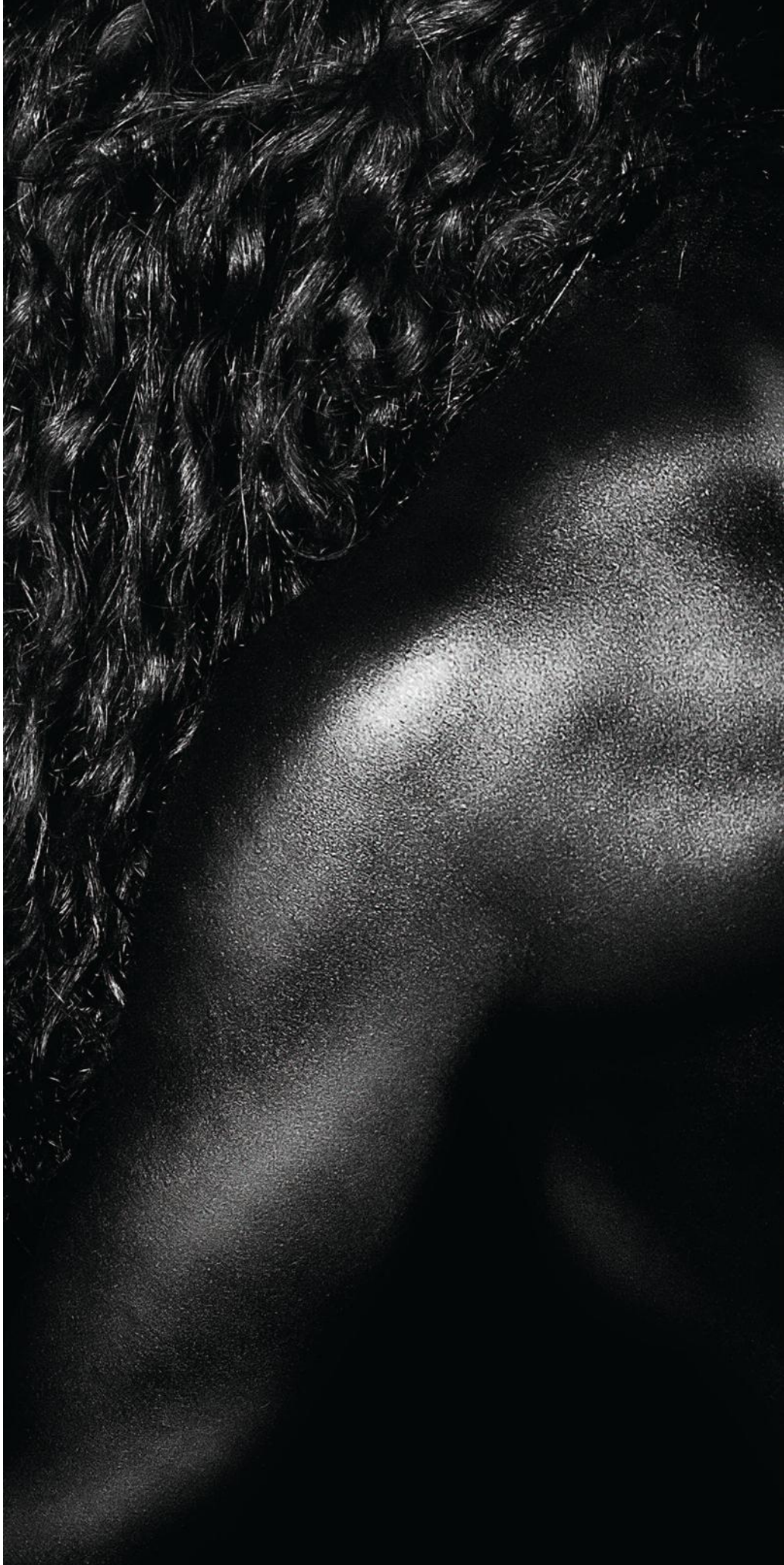


| Alchemy Zc233

Next spread:

| Left, Alchemy Lm254

| Right, Alchemy Cb255

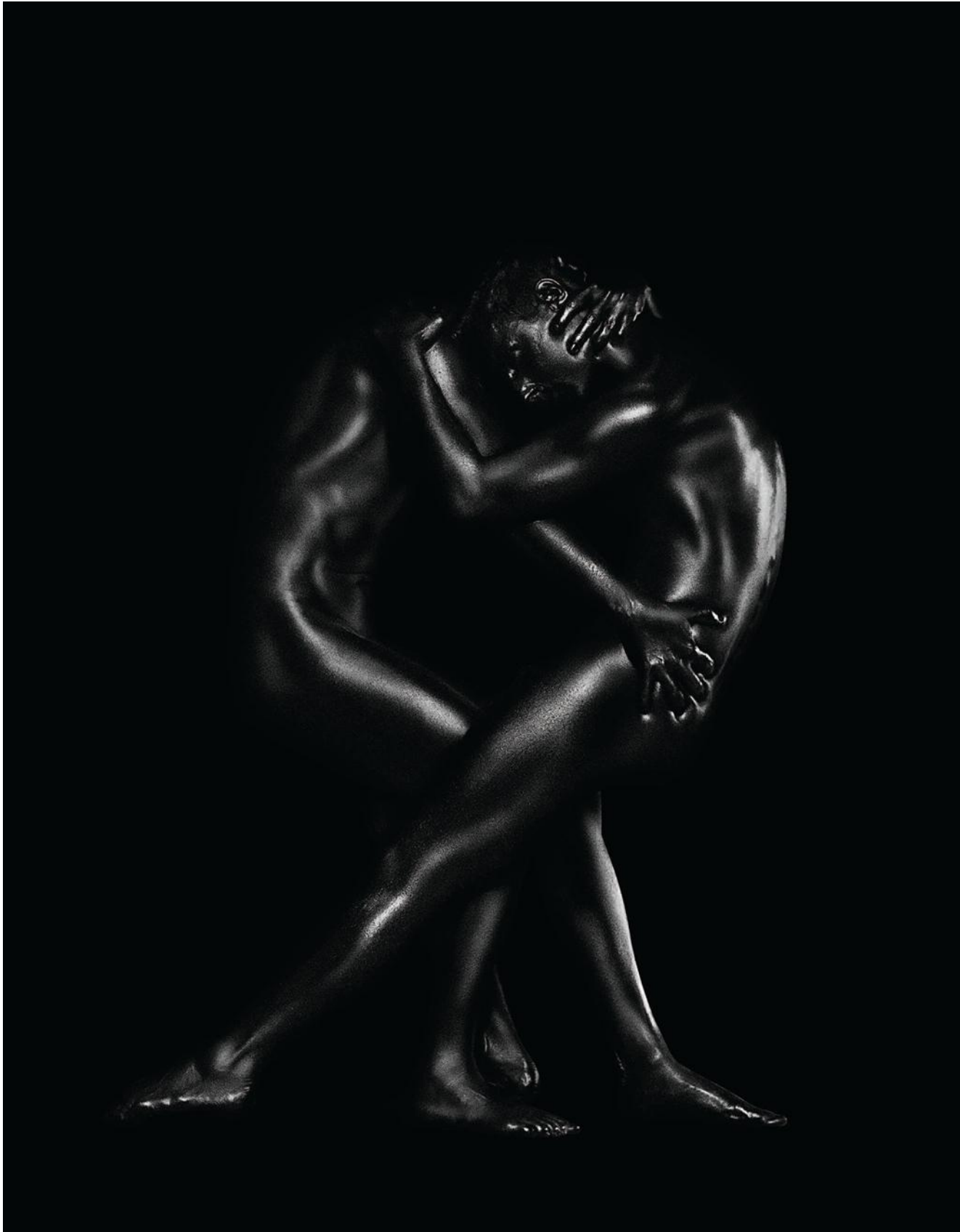














LIMITED EDITION ARCHIVAL PRINTS

Limited edition archival prints from the Alchemy series by photographer Michel Leroy are created using the finest museum quality archival paper and chromogenic print technology available to assure collectors the artwork will be stable for decades to come. Each print is accompanied with a signed and numbered Certificate of Authenticity to maintain a clear provenance for generations.

Archival C-Print on Aluminium Dibond images available in a single edition with two sizes:

- The 20" x 24" size is a limited edition of 10 prints + 2 AP.
- The 36" x 48" size is a limited edition of only 3 prints + 1 AP.

Once all prints in the edition have sold out, there will be no other prints available.

